

**SPECIFICATION**

**Rating:** AC 125V 3A: AC 250V 1A

**Contact R:** 20MΩ Max

**Insulation R:** DC 500V 100MΩ Min

**Dielectric strenght:** AC 1000V 1 Minute

**Electrical Life:** 50,000 Cycles

**Circuitry trait**

A	ON-OFF	Open and close type	with lock
B	OFF-(ON)	Open type	momentary
C	ON-(OFF)	Close type	momentary

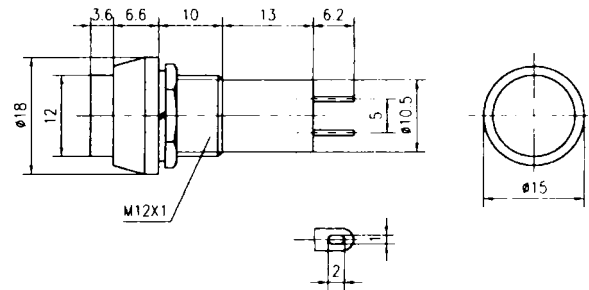
**4/6474-4/6475**  
**4/6471-4/6473**

PBS-11A PUSH ON/PUSH OFF

PBS-11B PUSH ON

PBS-11C PUSH OFF

AC 125V 3A; AC 250V 1A



**4/6484-4/6485**  
**4/6481-4/6483**

PBS-12A PUSH ON/PUSH OFF

PBS-12B PUSH ON

PBS-12C PUSH OFF

AC 125V 3A; AC 250V 1A

