

582470 (L-VWM06A/EN) 6 W Cabinet Loudspeaker

- **Intelligible voice and superior sound reproduction**
- **Robust metal enclosure**
- **Harmonious with all indoor decoration**
- **Simple power setting**
- **Easy installation**
- **Complies with EN 54-24 standard**



This loudspeaker is a high-performance 6 W voice alarm cabinet loudspeaker. It provides a broad frequency response range, low distortion and high sound pressure level for accurate and intelligible broadcast of evacuation messages and high quality sound reproduction. It is ideal for sound distribution in various types of commercial buildings. Its low-profile, white color design blends easily with most interiors in locations such as hotels, conference rooms, cinemas, factories and exhibitions.

This voice alarm cabinet loudspeaker complies with BS 5859 part 8 and EN 54 part 24.

Mounting

The loudspeaker is designed for quick and simple installation. First, mount the back on the wall or on the junction box using the rear screw slots. Cable can be entered from the rear or the side. Second, secure the grille cover with three side screws.

Power setting

There are four primary taps including 6 W, 3 W, 1.5 W and 0.75 W for your selection. The cable connector is mounted on the back cover for easy installation.

Technical Specifications

Electrical

Max. power	9 W
Rated power	6 W
Power tapping	6 W / 3 W / 1.5 W / 0.75 W
SPL @ 1 W / 1 m (100 Hz ~ 10 kHz)	91 dB
SPL @ 6 W / 4 m (100 Hz ~ 10 kHz)	86 dB
Frequency range (- 10 dB)	300 Hz ~ 15 kHz
Rated input voltage	100 V / 70 V
Rated impedance	1.7 k Ω / 3.3 k Ω / 6.7 k Ω / 13 k Ω
Connection	Ceramic terminal

Mechanical

Dimensions	Ø 170 mm x 170 mm x 63 mm
Diameter of speakers	4 "
Weight	1.56 kg
Color	White (RAL 9003)
Material	Metal

Environmental

Operating temperature	- 25 °C ... + 55 °C
Storage temperature	- 40 °C ... + 70 °C
Relative humidity	< 95 %

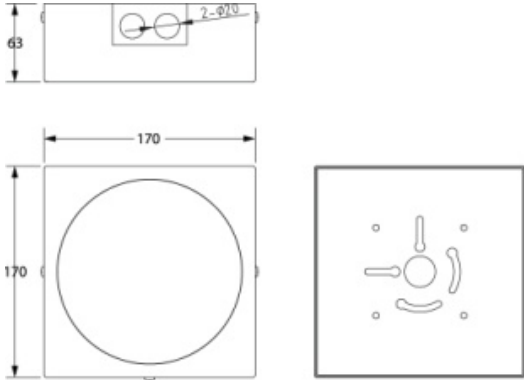
Order Information

Catalog description	6 W cabinet loudspeaker
Part number	582470
Type	L-VWM06A/EN
DoP number	CPR-DoP-2013002

Additional order information can be found in the product catalog "VAPA System VARIODYN D1".

- * The reference axis is perpendicular to the centre point of the front grille
- * The reference plane is perpendicular to the centre of the reference axis
- * The horizontal plane is perpendicular to the centre of the reference plane
- * The spec/date was measured using a standard baffle mounting in an anechoic chamber as described in EN 54-24

Diagrams



Dimensions in mm

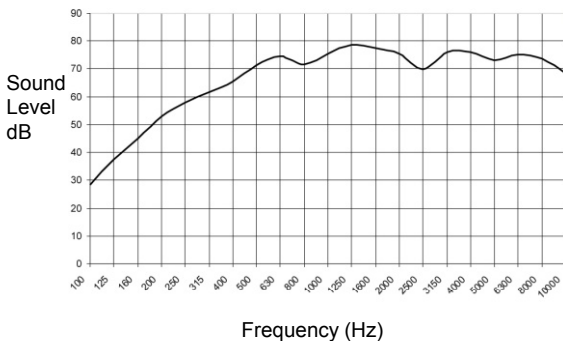
With Transformer: 100 V / 70 V line

1

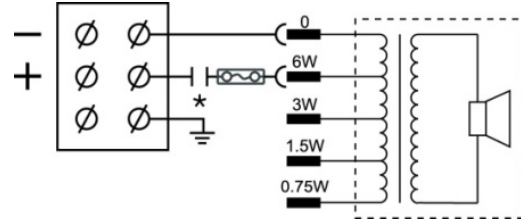
	Red wire plus tapping				Black
100 V	0.75 W	1.5 W	3 W	6 W	Com
70 V	0.375 W	0.75 W	1.5 W	3 W	Com
IMP (Ω)	13 K	6.7 K	3.3 K	1.7 K	

Frequency Response

Frequency response at 100 V / 4 m / 1/3 oct. smoothing



Circuit Diagram



* unit fitted with capacitor

Dispersion Angles

		Horizontal	Vertical
1 oct. pink noise	500 Hz	226 °	226 °
1 oct. pink noise	1 kHz	175 °	174 °
1 oct. pink noise	2 kHz	85 °	88 °
1 oct. pink noise	4 kHz	96 °	85 °