



## SELF-LEARNING UNIVERSAL WIRELESS K

### INSTRUCTION MANUAL AND WARNINGS

For your safety, please read manual instruction carefully before beginning installation.

### TECHNICAL SPECIFICATIONS

Power supply: 1 x CR2450 3V  
Storable codes: up to 12  
Users: 1 master + up to 11 standard  
Frequency: Multy AM/FM  
Code types: fixed and rolling code  
Working temperature: -20°/+60° C  
Size: 98x73x43 mm

### USERMANUAL

The MASTER PIN is unique and is necessary to memorize the codes to be transmitted from the Keypad and to manage the different USER PIN's. **PLEASE NOTE: MASTER PIN is factory pre-set to 1111.**

#### HOW TO CHANGE THE MASTER PIN

Enter the current MASTER PIN and hold the last number entered (1 in case of first modification) for at least 6 seconds.

The RED and GREEN LED's will illuminate constantly and the buzzer will emit a short sound.

Now press "0" button, the RED LED remains on while the GREEN LED begins to flash slowly.

At this point enter the new desired MASTER PIN by using between 4 and 8 characters (note that you can use both numbers between 0-9 and letters A-B).

If the PIN is usable the GREEN LED will become constant while the RED LED turns off.

Enter the new Master PIN a second time to confirm. The RED LED will illuminate constantly while the GREEN LED flashes slowly. If the password matches the first one entered then the RED LED stays the same while the GREEN LED will flash faster.

#### USER PIN

There can be up to 11 individual USER PIN's stored in memory.

To set or modify a USER PIN, enter the MASTER PIN and hold the last number entered for at least 6 seconds.

The RED and GREEN LED's will illuminate constantly and the buzzer will emit a short sound.

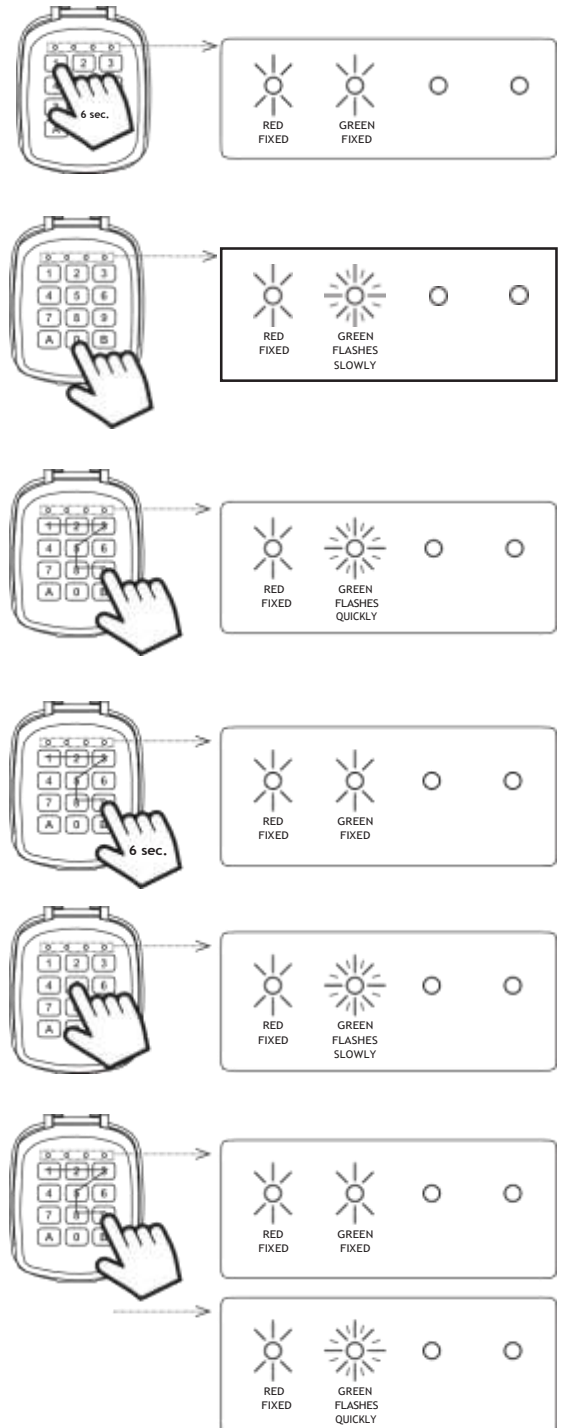
Now enter a reference key for the new USER. You can use any unused key from 1-9 or A-B. The "0", zero key is reserved for the MASTER USER. The RED LED will illuminate constantly and the GREEN LED will begin flashing slowly.

At this point enter the newly chosen USER PIN. The PIN must be between 4-8 characters in length, you may use any combination of numbers and letters for this.

If the PIN is accepted, the RED and GREEN LED's will illuminate constantly. Now you can choose which functions (previously set) are accessible to this USER PIN by selecting them one at a time. If no function is selected within 10 seconds, all functions will be enabled automatically.

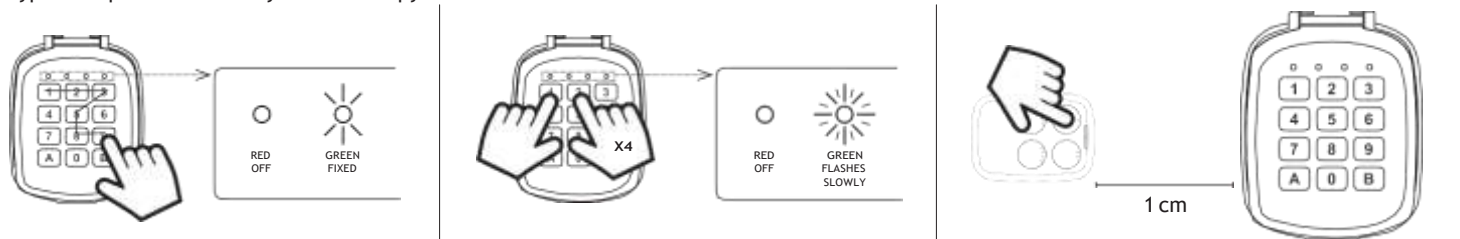
Now the RED LED will illuminate constantly while GREEN LED begins flashing rapidly to indicate that the procedure has been successfully accepted.

We strongly recommend that you take note of the MASTER PIN and keep it in a safe place in order to always maintain access to the system.



## RADIO CODES SETTING

1. Enter the MASTER PIN. The GREEN LED will illuminate constantly.
2. Press and hold button 1 and simultaneously press button 2 four times, then release both.
3. THE GREEN LED will begin to flash slowly which indicates it is ready for a code to be received. Place the source remote control about 1cm away from the Keypad and press the button you wish to copy.



- If the RED LED starts flashing quickly, it means the code has been correctly received. Press and hold any button on the keypad where you want to store this code to be stored (1-0 or A-B), the RED LED will change to constant, when the RED LED turns off, the procedure is complete. Release the button.



- If the GREEN LED gives a double flash, it is the indication that to complete the procedure the Keypad also requires the SEED CODE from the source remote control

Now enter the MASTER PIN and then the button where the code has been stored, and:

- If the desired automation starts working the procedure is successfully complete.
- If the desired automation doesn't start working, press and hold the button for at least 8 seconds, the RED LED will begin flashing which indicates that the technology has been enabled, trying to insert the new code on the related receiver. At the end of this automatic procedure the RED LED will turn off. Enter the MASTER PIN and press the desired button to check if the automation activates. If it does, the procedure is concluded, if not, it means the receiver is unable to receive any additional code via "radio" mode. In this case, refer to the instruction manual of the automation installed and follow the procedure for adding new remote controls manually.



### NOTE: THE SEED CODE FROM THE KEYPAD CAN BE TRANSMITTED AS FOLLOWS:

- Enter the MASTER PIN
- Press buttons 1 and 2 simultaneously for at least 4 seconds and release both when the RED LED begins to flash
- Within 10 seconds press the button required to transmit its seed code.



#### ERROR MESSAGE

If during SETTING or MODIFYING a PIN the PIN is entered incorrectly for any reason, or an already existing PIN is in the system, thus non-usable, the Keypad indicates the error by emitting a pulsed sound with the GREEN LED lit constantly while the RED LED flashes rapidly. This error message can also be given in case of mistakes during the radio code setting procedures.

#### DAILY USE

To light up the Keypad press any button for at least 3 seconds.

To activate the Keypad for usage, enter any of the PIN's set: the GREEN LED illuminates constantly to indicate that the Keypad is unlocked.

If a wrong PIN is entered, simply repeat the procedure and enter a correct PIN.

Once the Keypad has been unlocked you have 6 seconds to press the button which controls the function you require. The RED LED will illuminate and a short sound indicates the code is being transmitted. After transmitting, the keypad stays unlocked for a further 6 seconds to allow the user to send another command if desired.

NOTE: The MASTER PIN is always enabled to send any of the codes stored into the keypad, while individual USER PIN's are only enabled to send the codes previously selected for that PIN. For example, a visitor may only be able to access the front gate and not necessarily the garage door.

#### PASSWORD RESET

In order to reset passwords:

Open the lock with the key and separate it from the shell;

press on A and B at the same time and take off the battery from the back;

without releasing the buttons, insert one again the battery and wait for 15 seconds.

You will hear a sound and all buttons will switch on in order to confirm that the operation was successful.